

inseego



Skyus SC
by Inseego

Quick Start Guide

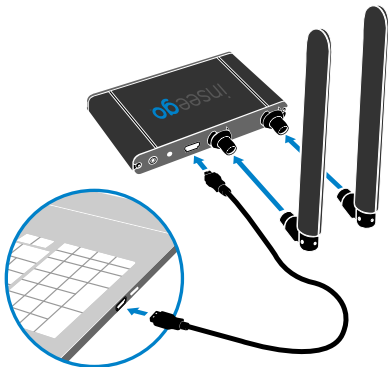
initial setup

System Requirements

1. Windows 8 or newer, Linux 2.6.32 or later, or Ubuntu 14.04 or later required.
2. Install the appropriate Windows drivers onto your system from: <https://www.inseego.com/software-downloads/>
3. The Skyus SC typically does not require drivers for Linux systems using the modem's built in CDC-ECM interface.
4. USB 2.0 port (5VDC @ 1A) required.

Connect your Device

1. Verify your device is active with your cellular carrier representative.
2. Connect antennas to both SMA connectors for cellular connection.
3. Connect the device to your system with the provided USB cable.



device login

Login to the Skyus SC

1. Verify your device is active, connected to a host, and antennas are installed.
2. Open a web browser and type skyussc.inseego.com:8080 into the address bar.
3. The device UI login page can be seen to the right.
4. Log in by using the following password:
[insgXXXX](#)
5. XXXX = Last four digits of IMEI (on device label)



Password:

Connection:	Up
Signal Strength:	-80
Connection Type:	4GLTE
Carrier:	Verizon
Phone Number:	+15417310092

user interface

Web UI

View all useful device statistics from the home page. To configure your device, click 'Edit Settings'.



Skyus SC1

Log Out

Connection Status

Carrier:	Verizon
Connection Type:	4GLTE
Phone Number:	+15417310092
IP Address:	100.67.86.150
SIM ID:	89148000001704220879
IMEI:	351709090104614
APN:	VZWINTERNET
Signal Strength:	-62 dBm
Signal Quality:	-10 dB

System Status

USB Voltage:	3.7 V
Temperature:	113 °F
Firmware Version:	SW-00095 SW19X07Y_02.10.00.00
Application Version:	SW-00097_10 Build 18

Connection Manager

Min. RSSI 3G:	-110 dBm
Min. RSSI 4G:	-120 dBm
Ping Interval:	15 minutes
Primary Ping:	www.google.com
Secondary Ping:	www.bing.com
Ping Retries:	5
Retry Interval:	5 seconds

Refresh

Edit Settings

device configuration

Manual Configuration

1. Fill in all applicable settings.
2. Click 'Save Changes'.

Creating a Config File

1. Fill in all settings as desired.
2. Click 'Save Configuration'.

The screenshot shows the SKYUS SC Inseego configuration page. At the top right, there are three buttons: 'Navigate Back', 'Refresh', and 'Log Out'. The page is divided into two main sections: 'Keep Alive' and 'Device Configuration'.

Keep Alive

Min. Signal Strength 3G	Min. Signal Strength 4G
<input type="text" value="-110"/>	<input type="text" value="-120"/>
Ping Interval (Minutes)	
<input type="text" value="15"/>	
Primary Ping Server (URL or IP)	
<input type="text" value="www.google.com"/>	
Secondary Ping Server (URL or IP)	
<input type="text" value="www.bing.com"/>	
Ping Retry Interval (Seconds)	
<input type="text" value="5"/>	
# of Ping Retries	
<input type="text" value="5"/>	

APN Configuration

Custom APN
<input type="text"/>

Device Configuration

Device Name
<input type="text" value="Skyus SC1"/>
Log-In Password
<input type="text"/> <input type="button" value="Reset Password"/>

Below the Device Configuration table are several buttons: 'Save Changes', 'Discard Changes', 'Factory Reset', 'Update Application', 'Load Configuration', 'Save Configuration', and 'Reboot Device'.

Loading a Config File

1. Click 'Load Configuration'.
2. Select the appropriate file and click 'Open'.

additional information

APN - Access Point Name

For your device to successfully connect to the internet, it needs to have the correct carrier-specified APN selected. If you do not know the correct APN for your device, please contact your cellular carrier representative. To change/update/review your current APN setting, follow the steps on the user interface pages of this quick start guide.

Drivers

Drivers are required to use the Skyus USB device with Windows platforms. Linux systems (Kernel 2.6.32 or later; Ubuntu 14.04 or later) typically do not require drivers. Windows drivers are available at <https://www.inseego.com/software-downloads/>

Connection Manager

A connection manager establishes and maintains the cellular connection of a device. The Skyus SC by default has a built-in connection manager that is typically compatible with Windows 8 or later, Linux Kernel 2.6.32 or later, and Ubuntu 14.04 or later.

Activation

SIM activation is required to use the device. To complete or verify activations, contact your carrier representative. PLEASE NOTE: It will take at least 30 minutes to connect with your device after the activations process has been completed.

User Guide

Please visit www.inseego.com/support-documentation/ to access the User Guide for information regarding the device, regulatory information, and an integration guide.

frequently asked questions

**For more information, visit www.inseego.com
or contact technical support at technicalsupportus@inseego.com**

Q: What hardware/operating systems support the Skyus SC?

A: Windows 8 or later is supported by the Skyus SC using Drivers that can be found at <https://www.inseego.com/software-downloads/>. Linux Kernel 2.6.32 or later and Ubuntu 14.04 and later are expected to be plug and play compatible using the devices built-in CDC-ECM interface. If integration support is required, please contact inseego.

Q: How do I set up port forwarding or other routing rules on the Skyus SC?

A: The Skyus device provides a WAN interface to the host system (similar to an Ethernet card or a Wi-Fi module), but does not manage the flow of any IP traffic. Any routing functions must be handled by the host system.

Q: Do I need to have antennas connected?

A: Yes. Unlike consumer-grade USB modems, appropriate cellular antennas are required on both the Primary (MAIN) and Diversity (AUX) antenna ports.



For more information, please visit:

www.inseego.com

©2018 Inseego Corp. All rights reserved. Complying with all copyright laws is the responsibility of the user. Without limiting the rights under copyright, no part of this document may be reproduced, stored in or introduced into a retrieval system, or transmitted in any form or by any means (electronic, mechanical, photocopying, recording or otherwise), or for any purpose without the express written permission of Inseego Corp.